



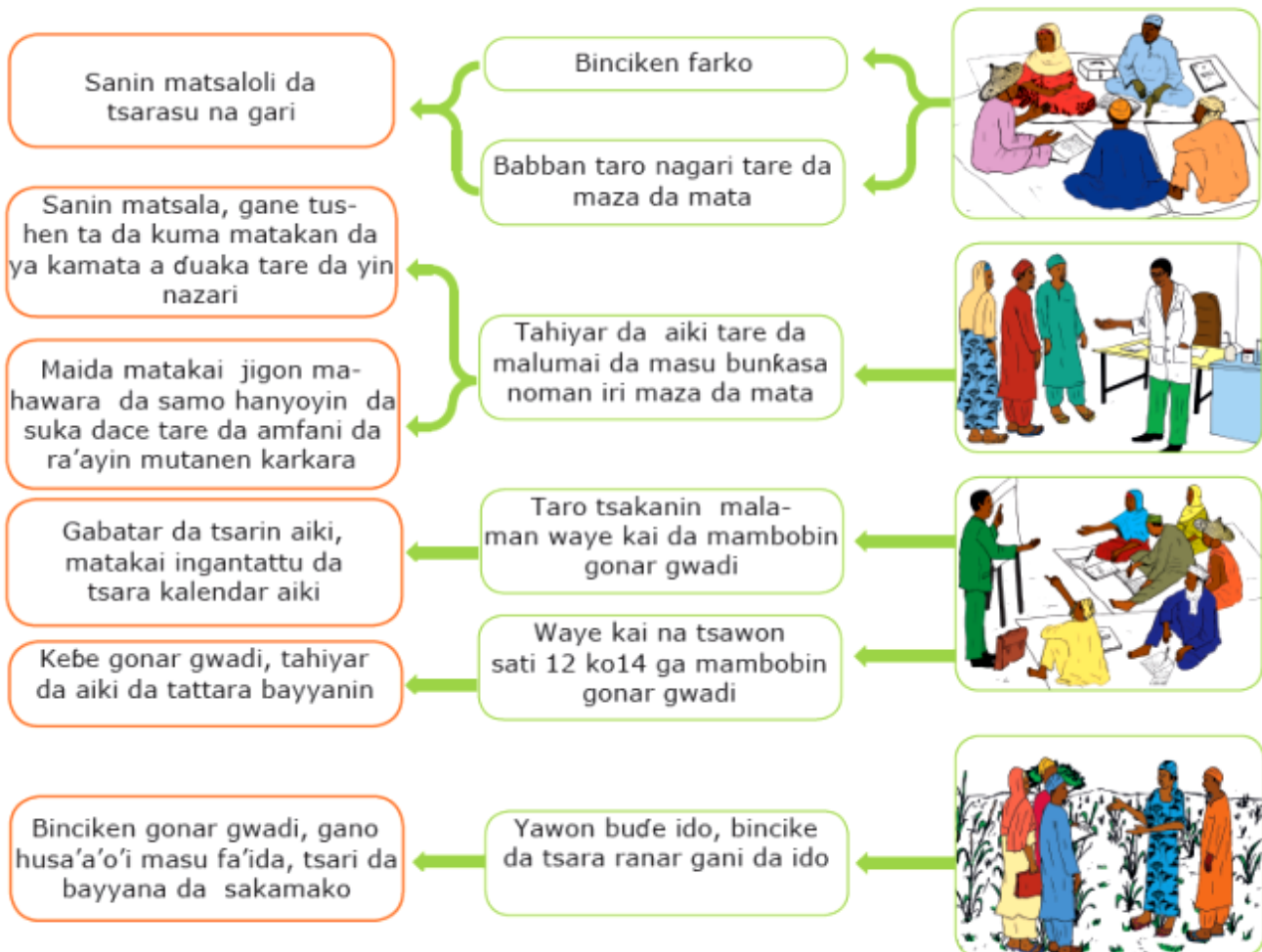
Gonar gwadi

Gabatarwa

- Gonar gwadi ta kumshi gungun jama'a maza da mata 20 ko 25 yan sa kai. suna haɗuwa so ɗaya cikin sata a duk tsawon damana domin bi sau da kafa wajen tahiyyar da aikin gonarsu ta gwadi.
- gurin wannan aikin shi ne su lura da duk wani sauyi na yanayin shibkar, su fahimci abubuwan da ke wakana kuma su gano matsalolin da aka fuskanta domin sanin yadda za su magance su a gaba, sabili da su san hanyar da ta dace wajen samun albarkar gona mai amfani .
- Gonar gwadi na ba manoma maza da mata damar koyo cikin sauri da kuma lakantar sababun husa'o'i na zamani tare da la'akari da karfin kowane manomi da kuma la'akari yanayi.

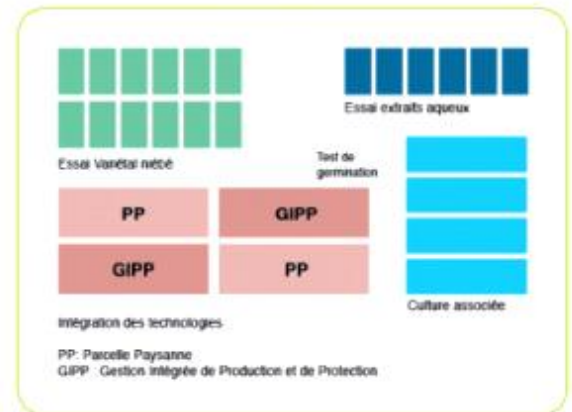


Matakan tahiyyar da gonar gwadi



Yadda ya kamata gonar gwadin ta zama

- Zaben hili bai daya kusa ga hanya ,mai launin yanayin karkar;
- A kebe hili tsaye zate babu lungu;
- A sa taki baki daya cikin gonar;
- A yi shibka da kurege domin hida kuya da kyau;
- A lika shaida rubuce da harshen gida don ba mam-bobi gonar gwadi damar gane fasalin da kyau ;
- A tabbatar da wuri ne wanda ba bu jayayya kan shi.



Abubuwa masu mahimmanci domin tahiyar da gonar gwadi

- 1 **Tsaida ka'idodin zama mamba** : kasancewa mamba na kungiyar manoma, kwarewa da sanin tsarin da gonar gwadi ta amince da shi , samun lokaci a kalla rabin yini cikin sati, tanadin wasu yan kuɗi domin aiki da sabuwar husa'a kuma da sanar da sauran yan uwa . kishi 20D na mambobin ya kamata sun iya karatu da rubutu da lissahi.



- 2 **Samun manoma maza da mata masu kokari**, masu jimirin aikin gona, kuma su rika tsara haɗuwar waye kai da ba da bayyani bisa gonar gwadi ; su san mahimmancin gonar da wahalarta kahin su halarci duk wani tsari da za huskanta.



- 3 **Ma'amala da kwararu wanjen tahiyar** da aikin gona , da yin tsayin daka da ba da kai ga duk wani aikin da za aiwatar domin ci-gaba sabin hikimomi na bunkasa noma.



- 4 **A zaɓi masaukaka maza ko mata masu halaye kamar haka** : masu jin harshen karkara da iya karanta shi da rubutawa , kwararu ta fanin gidan gona, masu kawo talafi da yin rahoto cikin lokaci, masu daratta aikinsu da hakuri, masu taimakama masanan bincike da nazari.



Abubuwa masu mahimmanci domin tahiyyar da gonar gwadi

- 5 A tattara kayan aiki wanda suka dace masu tallafama mambobin gonar gwadi wajen fahimtar sabin hikimomi da sauri kuma asaukake.



- 6 Hiddo sabin hikimomi da matakan da suka dace, wanda bincike ya yarda da su da wa'anda aka hido cikin nazari tare da mambobin gonar gwadi. Duk kayen aiki ya kamata a ce suna kusa ga mambobi.



- 7 Duk aikin da za a zatar ,to a yi amfani da jinsi , a kula da ba maza da mata duk wanni makamin da ya dace banda bambanci , kuma ayi aiki da ra'ayin duk mambobi wayen tsarin tahiyyar da aikin da zaben hikimar da ta dace da wurin da ya kamata ayi gonar. don kowa ya lakanci aikin yadda ya kamata kuma ya kawo ta shi gudunmuwa.

karko

karkon gonar gwadi na farko ,sai da kuɗi wanda za su ba da damar tahiyyar da wasu ayyuka kamar haka: sayen taki,ɗaukar nauyin horon malami ko malama,sayen maganin kwari , kayan aiki da iri.Haka zalika gonar gwadi tana iya kawo kuɗin shiga ta hanyar saida iri na shibka da bada wasu kayan aiki haya kamar na hesa magani da sauransu.Saboda haka ya cancanta a kai kuɗin da suka shigo wurin ajiya; assusu ko banki don kullawa da su da kyau.

Dadewar gonar gwadi tana karuwa in tana amfani sosai da sosai da fasalin da kungiyar manoma ta kafa,kuma da ma'amala da bankin iri da na saida magani , abanci da na tai-mako.



Capitalisation www.fao.org/knowledge/km-gender/capitalisation-bp/fr

Projet Capitalisation (FAO Niger)
BP 11246 Niamey
Tel + 227 20 72 33 62
km-gender@fao.org



INRAN - Institut National de Recherches Agronomiques du Niger
Dr Baoua B. Ibrahim, INRAN Maradi, NIGER
Tel + 227 96 97 01 90 + 227 90 42 35 73 baoua.
ibrahim@yahoo.fr



Projet Intensification de l'Agriculture par le Renforcement des Boutiques d'Intrants Coopératives
FAO BP 11 246 Niamey, NIGER
Tel + 227 20 37 32 36
contact@iarbic.net www.iarbic.net