



Sata kaɓ ga haggoy nda farmo Zander ganda ra

	<p>Bon feeray tira: Farey hirri sasare / kali-sinjeɗ <i>Euphorbia balsamifera</i></p>	
---	--	---

Hantumou: *MANA KOUDOUSSOU Ibrahim, RA-Zander.*

Mate kaù i ga barre daù ga farey hirri sasare/kali-sinjeɗ baafunante bangandi

A. Sanno dunguriyandi yaùo

Tuuro kaù se I ga ne « barre » zarma cinne ra, tuuri no kaù ku yaùo ga to meetar 2 ga koy meetar 5. Zinder gandaa ra i ga goy nda gumo ga farey hirrey bangandi. Bundo no i ga pati pati gali gali yaù ga sinji hayni, waatin kaù tayandi si laabo ra. Santimeetar 5 ga koy waranza no bungey nda care game ra. Laasaabu ga ize 1300 ga koy ize 8000 no i ga dase ga eka fo koli ga bare.

Da i na barre Saùey daù ga hirrey baafunante bangandi, a ga alfarey wa almaney hasarawey farmi batamey ra, a ga I wa batama ma te hari zuru, a ga i wa mo hawo ma laabu nafanta sambu. Tuurey kaù bu sasara ra (wala kali sinjo ra), i ga i pati ga danji funsu nd'ey. Da i na hirrey bangandi, za jiiri sintina, hirrey ga hawo gaayi, I ga batamey wa almaney hasarawey. Wo din banda, ni si nooru ka ga hirro sajaw.

Da hirro zay nooru wi yaù boobo si no zama boro ga du roogo bundu yaù ga tilam boro almayalo ga hin mo ga ni ga.

B. Ifo ga ti hirri sasare wala kali-sinji baafunante



Hirri sasare wala kali-sinji baafuante wo tuuri yaù no kaù i ga duma, kaù ga fari wala batama kali hay kaù ga naù (i) i ma i hirrey bangandi ; (ii) I ma dumarey hallasi hawo nda hari zurey se ; (iii) I ma du hina yaù tuuri, wala almaney se ùwaari.




Hiiri sasarey wala Kali-sinji wo farmi nda batamey nda saajey do haray dabari yaù no kaù ga naù du farmi albarka waana waana alwaato wo kaù ra alwaato bare yaùo ra

Da boro ga hirri sasare wala kali sinji te, boro hima ga nufey kaù se boro go ga a te kwaarandi hala boro ga tuuro dumo suuban.

“Barre” tuuri dumi no kaùga ga te kali sinji wala hirri sasare se gumo, a ga fari wala batama hallasi. A ga zay waasu, a ga te mo kambe yaù kaù ga naù i ma kom care ra, sanda mate kaù fota na a cabe nda.

C. Ifo ga ti barre hirri sasare/ kali-sinji nafa

- A ga naù dumarey ma wa almaney: Barre wo I ga hin ga fari kali nda nangu kulu kaù I si almaney haw zama tuuri no kaù almaney si ùwa. Alfarey ci kaù a hawo si kaanu almaney se.
- Hawo nda hari zurey si hin ga ga laabu nafanta hasara: Barre ga haw gaayi hala mani mooso, a ga laabu guwey ganji a ma farmi batamey ùwa (sanda mate kaù kambe wo fota na cabe) zama a na Burkina Faso wane farmi batamey hallasi, a na i wa nda taaso kaù ga batamey ùwa (sanda mate kaù Saahel Laabey nda care game sataa kaù ga tangam nda taneera/CILSS tira fo na bangandi, 2021).
- A ga naù boro ma du tuuri kaù ga hina : Barre bundu koogey nda Barre gali koogey kaù yaù cindi kaù I pati, kaù cindi dase yaùo waate I ga nafa ndey ga hina (Bindo ra foota).
- Barre hiiri sasara/ kali-sinji baafunanta ga naù tuuri dumi fo yaù ma zay kaù yaù gonad albarka . Barre hiiro ga hin ga te kumsay hanam izey kaù hawo ga sambu ga kande se. Tuuro dumey din ga zay a ma te kopto yaù kaù boorey ga ùwa iga neere mo (sanda mate kaù kambe ùwaari foota na cabe iri se).
- A ga farey hiirey bangandi.

		
Barre sasara kaù na teneera nda hawo gaayi	Barre bundey kaù I ga nafa ndey ga hina	Hanam koptey kosu yaùo

D. Kali sinjey/ hirri sasarey do haray goy jinayey

1. Goy jinayey

- Adda : kaù I ga tuuro galey zabu nda, I ga karjey mo ka (addaa hima ga kaanu),
- Kalma nda peelu : guusey fansi yaùo se,
- Torko : Galiizey sambu yaùo se, hayni wala haamo kwaarey wala binde galey kaù gonda karji kaù ga tuuro sutura hala koptey ma fatta galiizey.

2. Zaada yaù batamey

- Nangey : Miriya, Drum nda Guna kominey,
- Beene haro: batamey kaù ga du mm 400 ga koy 600 ga kaù jiiri ra. Barre ga zaada batamey kaù ra teneera go kaù si to beena hari mm 200 jiiri ra,
- Alwaato: barre tuuro ga zay nangu yaù ra kaù zaaro ga dungu ciino ma ga yay (Sanda ma te kaù I na a ci CILSS tira ra, 2011),
- Batamey irey: taasi, botogo nda taasi. Barre tuuro ga zay ba nangey kaù gonda tondi ra.

3. Tilam yaùo

- Types d'exploitations : Batamey kaù I ga goy : farey kaù I ga goy kaydiya ra (hayni, haamo, dunguri, damsi,) nda nda wo kaù yaù ra I ga jawo goyo te (tomaati, salaati,),
- Alwaato kaù I ga duma: heemaro banda kaù batama sinda harandaù (Kaydiya bisa handu 2 banda deedandi waati kaù batama sinda harandaù),
- Mate kaù I ga tilamo te nda: Galey hinne no I ga dasa. I mana hima I ma kasu, imana hima mo I ma kayna. Bundiizey kaù I ga duma tafay yaùo mana hima ga bisa cm 2 deedandi (CILSS,2011),
- Bunga hinka game ra: cm 5 ga koy 30 no I ga daù bungey nda game ra,
- Galey/ bundiizey dimma: Jandey wo kaù I ci banda da i goy ndey tilamo waate, gali 1300 ga koy 8000 ni o ga daù ga eka fo kurkutu ga windi,
- Man no I ga du galey/bundiizey: Soro boobo kulu alfarey si galey/bundiizey ka kala hirri sasare/ kali-sinji zeeney ra wala binde almaney guttaley nagu kaù I na barra daù farmi batamey hallasi ga du ga wa koine nda alfarey nda kurkey game ra fitiney.



Barre hirri sasare/ kali-sinji kaù I zabu ga gali/bundiize yaù ka



Barre hirri sasare/ Kali sinji hinka game kaù ga almaney guttal cabe

Da I ga hirri sinji , I ga hin ga te nda barre baafuna hinne wala binde I ga hin ga a ma margu mo nda bundu koogey :

▪ **Hirri taji sinji yaù kaù ga dogon**

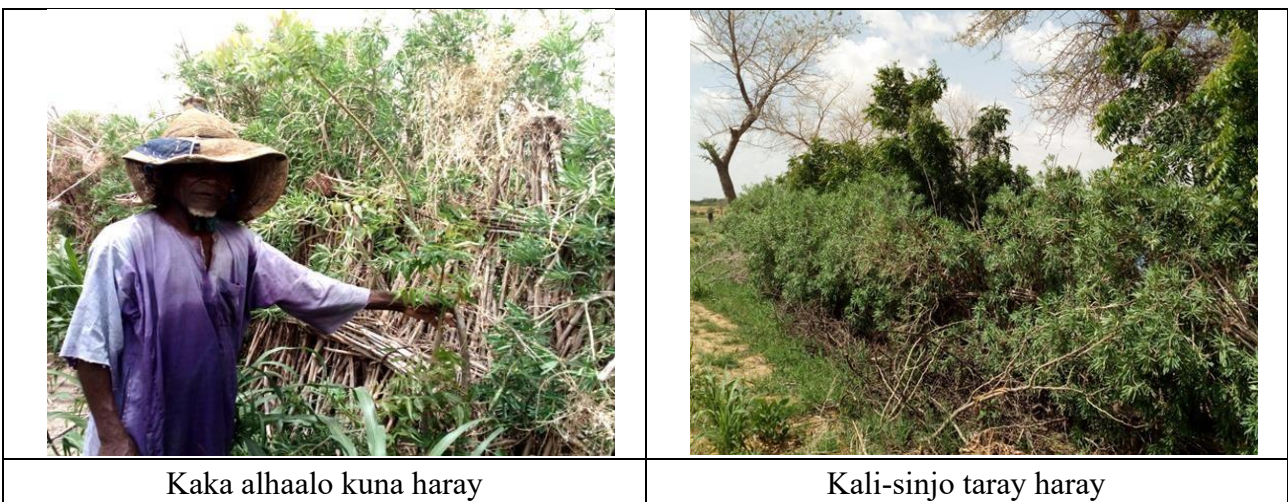
Tilam yaùo si te kala guusiize yaù ra wala I ma gatamba kuku te kaù ku yaùo ga te meetar jare hirro boù. I ga hin ga bundiizey duma saha din kaù I na I pati wala binde jirbi yaù banda waati kaù I na i koogandi. Duma yaùo ga boori gumo waati kulu kaù I na gakey koogandi jina, mate kaù alfarey na a ci nda. I ga hin ga ba fanda galey I ma koogu habu 2 ga koy 3 deedandi, wa kaù go a ra ma du ga fatta (mate kaù I na ci Saahel Laabey nda Care Game Sata kaù ga tangam nda Taneera (CILSS) tiraa ra 2011).

Duma yaùo banda I ga hayni kwaari yaù daù ga galey haw care ga (Haw torko me 4 ga koy 8 deedandi eka fo se) hirro ma du ga kay ga boori. I ga hin ma ga tuuri kambe yaù daù ga galey kaka. Wo din no ga naù sasara/kalisiinji ma dumarey hallasi, a ma te hawo nda almaney se kosaray za jiiri sintina kaù I na I tilam. Haw yaùo kaù I ci banda din, kali-sinjo tilam yaùo waate no I ga a te. Hay kaù ga naù I ma du kali sinji baafunante , I ga hin ga a tuuri kambe kaù gonda karji lafi tiksa ga.






• **Installation Hirri sasare/ kali-sinji baafunante kaù I ga margu nda tuuri kambe**

Guusu no I ga fansi ga batama kurkutu ga windi kaù ga te meetar jare guusu yaù. Boro ma ceeci hayni kwaari yaù (Haw torko me 25 eka fo se) kaù boro ga daù guuso ra nga nda barre galey. Boro ma barre galey sinji taray hiiro dio haray boro ma hayni jeeney ma kuna haray hay kaù ga naù almaney ma si I ùwa. Da alwaato koy, haro ga hayni kwaaray ùwa wala dusu ma I ùwa. Waato din ga a mana to I ma kaka te koine zama barra zay ga batama hallasi.



4. Hirri Sasara Kali-sinjo/ saajaw yaùo

- Haùandi yaùo: I si a haùandi,
- Sasara/Kali sinjo hanse yaùo : i ma si a zabu fondo ma si koy ga fondo ka almaney se,
- Dumarey kaù bu barmay yaùo nda funey daabu yaùo : boro ma lakkal daù sasara ga alwaati ga ka alwaati. Dumari kaù bu kulu boro ma barmay. Boro ma nangu kulu kaù te furo yaù do daabu nda duma yaù taji wala tuuri kambe karjikoy. Galey/bundiizet boro ga duwey barrey kaù je ga.

		
Barra bundiize yaù kaù i ka ga koogandi , i ma du ga dumrey kaù bu barmay	Barre \$a kaù bu kali-sinjo sasara ra	Barre fun tajey kaù I daù ga fune daabu kali-sinjo ra


5. Kali sinjo nafa

- Bindiizey pati yaùo: Jiiri hinza banda no I ga hin ga bundiize ka barra ga,
- Hina yaù tuuri ka yaù: Barre \$a jeyantey ga no I ga du hina yaù tuurey.

6. Marja kaù Alfaro ga wi

Barre kali-sinjo sinda nooru wi yaù boobo fo zama alfarey almayaaley no ga I ga goyo ga. Kaù waana kali-sinji baafunante kaù I ga margu nda tuuri kambe koogo kaù ga Alfaro na 7250 wi hayni kwaaray daymo a ma du ga batama kaù mana to eka (0,78) fo koli ga bare. Deedandi ga, a si koy ga tun 9400 eka fo kulu.

Tuure galey nda tuuri kambey kaù gonda karji, alfarey bumbey no ga I ceeci ngey boù se. Hayni kwaarey kaù I ga daù ga te kaka si fun kala I farey ra. Goy jinayey (addey, kalmey, peeley, torkey) kwaara ra no I ga hin ga I hi yaamo.

	<i>Bon feeray tira wo, manti kala alfarey nda kurkey saruuso kaù go Zander no na a sijiri. Alfarey bayra no</i>
---	---