

Réseau National des Chambres d'Agriculture du Niger



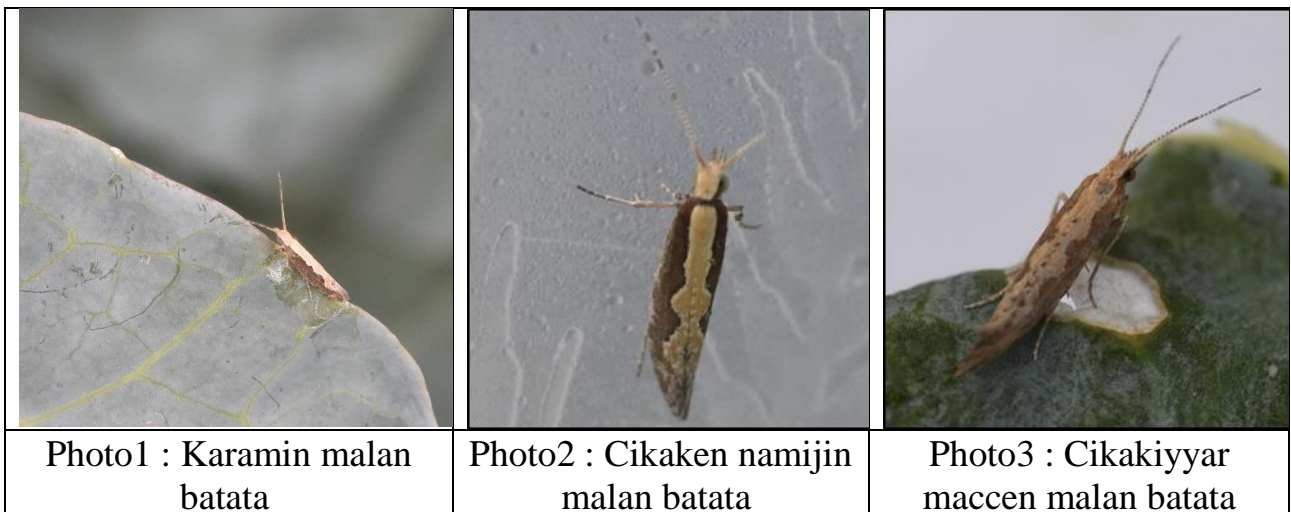
Yadda tsutsar chou ko plutella take

Dr Haougui Adamou et Bibata Ali Outani (INRAN), Aïssa Kimba et Patrick Delmas (RECA), Dr Garba Madougou et Salissou Oumarou (DGPV) / 31 mars 2019.

Zamu muku hira kan wani mungun tsutsar chou da ake cema teigne du chou a turance.

Tsutsar chou da ake cema plutela da turance wani karamin malan batata ne(wanda yafi sabro girma,photo na 1) tsutsar shi ce tafi yawan banna ga chou a kasar Nijar.

Wanan kwarin ana samun shi koda yausha tsawon dukan shekara a fadin kasar Nijar aman yafi yawa a lokacin zahi tsakanin watan mars da mai,yana iya bata illahirin gonar chou.



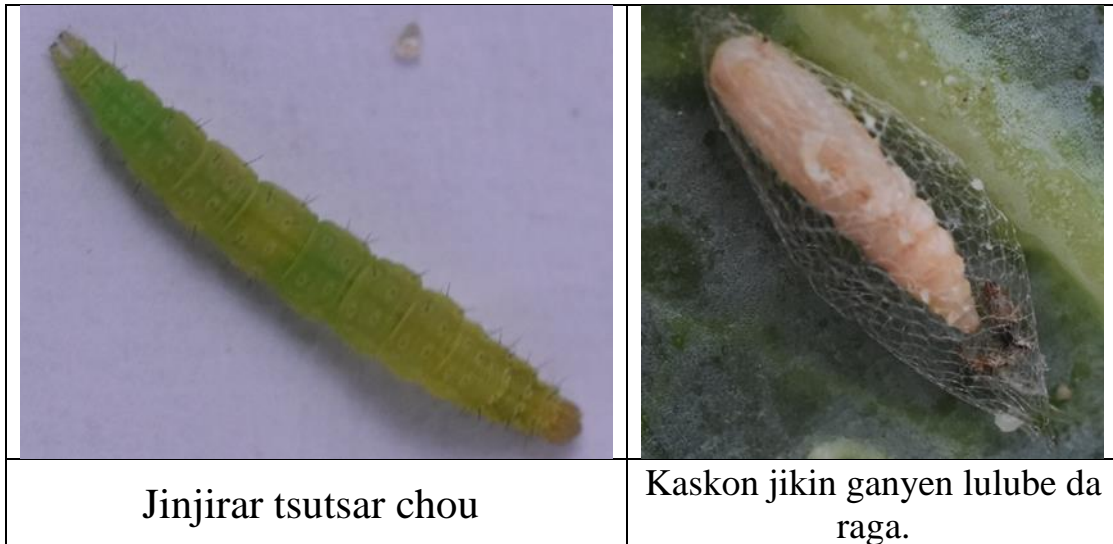
Malan batatan nada tsawon (mm) 10. Lokacin da yake saman ganye fukafukan shi na gamewa kamar runfa kuma a tsakiyyar su akoye wani zane masara da ya hada wasu launi biyu toka toka daga hura.

Fukafukan na namiji sunhi na maccen cizawa kamar yadda kuke gani a photo na 2 dana 3.

Jinjirar tsutar ta malan batata karama ce kwarai aman ana iya ganinta ido da ido, canwa ce tana kama da ganyen na chou ; in ta matsu sai ta saki wani zaren zanzaro ta fado kasa.

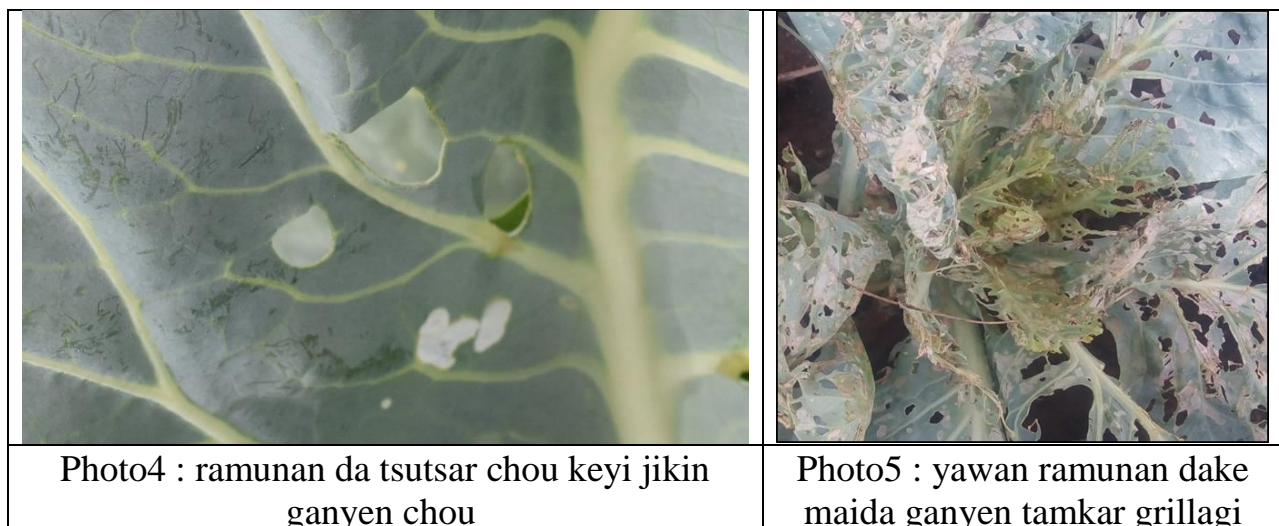
Kaskon tsutsar da baya motsi shine ke nuna tazarar dake tsakanin jinjirar tsutsar da malan batatan da ya kasaita. Suma tsanwaye ne kuma suna makale kalkashin ganyen inda suke lulube be da wata yana.

Lokacin zahi, addadin rayuwa tsutsar ta chou, daga lokacin da ta zuba kwayakoye zuwa girman ta lokaci kalilan ne, kwanaki ishirin (20jours) ne kawai.



Wacce irin banna ce tsutsar chou ke haddasawa?

Ayan kwayayen sun kinkyashe, jinjirar tsutsar, na nitsewa cikin ganyen inda take yin gida. Bayan rikida ta farko. Jinjirar tsutsar na barin gidan nata ta koma saman gayen. A aji na uku ne jinjirar tsutsar keyin banna kwarai, daga bisani sai a rinka ganin wasu hudodi jikin ganyen da wasu raga raga kamar yadda kuke gani a jikin photo na 4. Ramin dake jikin gayen babu komi a cikin shi sai wata raga fara wanda ke bushewa ta zube sai ta bar ramin wayam jikin ganyen. In ramin yayi yawa ganyen na iya zama tamkar wani girllagi kamar yadda kuke gani a photo na 5.



A jimilce bannar ta nada sauki a lokuntan sanyi (daga watan decembre zuwa watan fevrier). Tahi tsanani a lokacin zahi musaman ma bayan damana (watanin september da october), lokacin da zahi yafi yawa.

Yaya ne ake yaki da tsutsar chou ko plutella ?

- Abu na farko shine kare renon iri cikin gidan sange nada mahimmanci kwarai da gaske wajan yaki da tsutsar chou, wanan wata dama ce ta kare sabon dashe kafin a kai ga dasa shi , wanan aiki ne mai sauki kuma baida wata tsada ga manomi.
- A lokacin rani kamar da zahi sosai, watan mars, ana bazu shawarar da kuyi unfani da magungunan kashe miyagun kwari wanda aka yi da diyan bedi ko ko kuma da tanka, ganyen bedi, taba ko tafarnuwa da za'a zubawa da wuri da zarar kunga malan batata na farko ko kuma kun lura da wasu hudodi jikin ganyen chou, wanan kuma a ko wane sati har sai kun kai ga girbi, ya kamata ku maida hankali sosai kan gonar ku a kowace rana.
- Yin unfani da magungunan zamani ita ce hanya ta karshe : ya kamata ku zabi magungunan da zasu daidai da lokacin da ya kamata ku girbe gonar ku, magungunan : DELTAMETHRINE, CYPERMETHRINE, EMAMECTINE da sauran su da zarar bannar ta fara.
- In kuna noma a gandari daya, ya zama wajibi ku yi shawara takanin ku manoma ku sa magani lokaci guda, ko na galgajiya ko kuma na zamani.
- In manomi ya bar gonar shi a lokacin zahi dalilin bannar tayi tsanani , to ya zama wajibi ya cicire shipkokin na chou kin ya ba dabbobi ko kuma ya binne su don kar miyagun kwarin su ayayafa sukai ga gonar makopcin shi.

Manoma ku sanda cewa mutun daya baya kai gaya sai tare da ban hanun dangin, ku hada kanku ,kuyi kokowa da miyagun kwari tare dan ku gudu tare ku stira tare.

Idan kuna bukatar Karin bayani to sai ku tuntubi mashawartan nan na kugiyoyin **RECA** da **CRA** kan **92 24 24 24** (Orange) - **89 97 97 74** (Airtel) - **84 74 74 74** (Moov) - **93 32 38 92** (Niger-telecom) ko kuma WhatsApp a kan **92 24 24 24**. Wanan layoyin dai kungiyoyin **RECA** da **CRA** ne suka tanadar muku su don waye muku kai kan ayyukan ku na noman gandari.